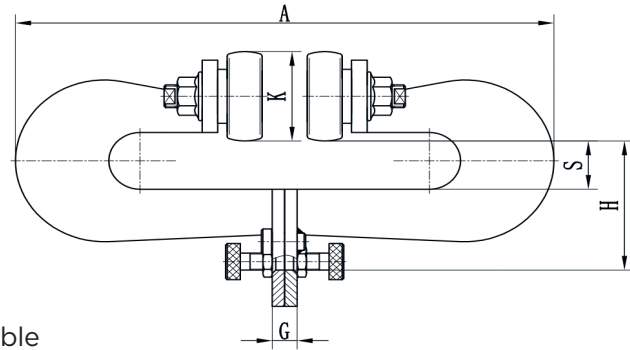
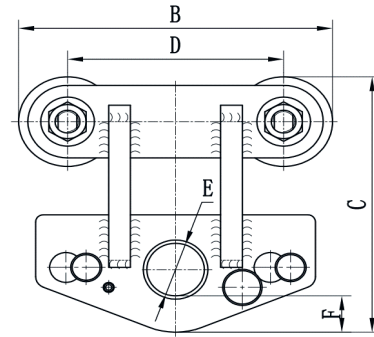


# QBT QUICK BEAM TROLLEY



Scan for Webpage,  
User & Parts Manual



- Capacity Range: 1t - 10t
- Heavy Duty Quick Install Push Type Trolley
- Simple Installation, No Special Tools Required
- Fits both 'S' beams and 'W' beams
- Low Profile Design
- Corrosion Resistant Stainless Steel Plungers
- Corrosion Resistant Double Sealed Bearings
- Meets or Exceeds ASME B30.16 Where Applicable
- Bearings and Plunger Assembly are Serviceable

## SPECIFICATIONS & DIMENSIONS - QUICK BEAM TROLLEY

	2200	6600	13,200	22,000
Capacity (lbs)	2200	6600	13,200	22,000
Rated Capacity (t)	1	3	6	10
Test Load (t)	1.27	3.83	7.66	12.77
Minimum Beam Radius (ft)	3.9	4.9	6.6	8.2
A	13.6	13.1	17.7	19.7
B	8.0	10.2	12.2	15.7
C	7.1	9.1	11.7	13.6
D	5.5	7.0	9.0	10.2
H	3.6	4.8	6.8	6.9
S	1.3	1.1	2.0	2.0
E	1.5	2.6	3.5	3.5
F	1.0	1.0	1.7	1.4
G	0.6	0.8	1.1	1.6
K	2.5	3.2	4.2	5.5
Beam Width Range (in)	2.8 - 7.99	2.9 - 7.99	4.0 - 10.0	5.0 - 10.0
Unit Weight (lbs)	21.4	37.0	67.0	156.5

