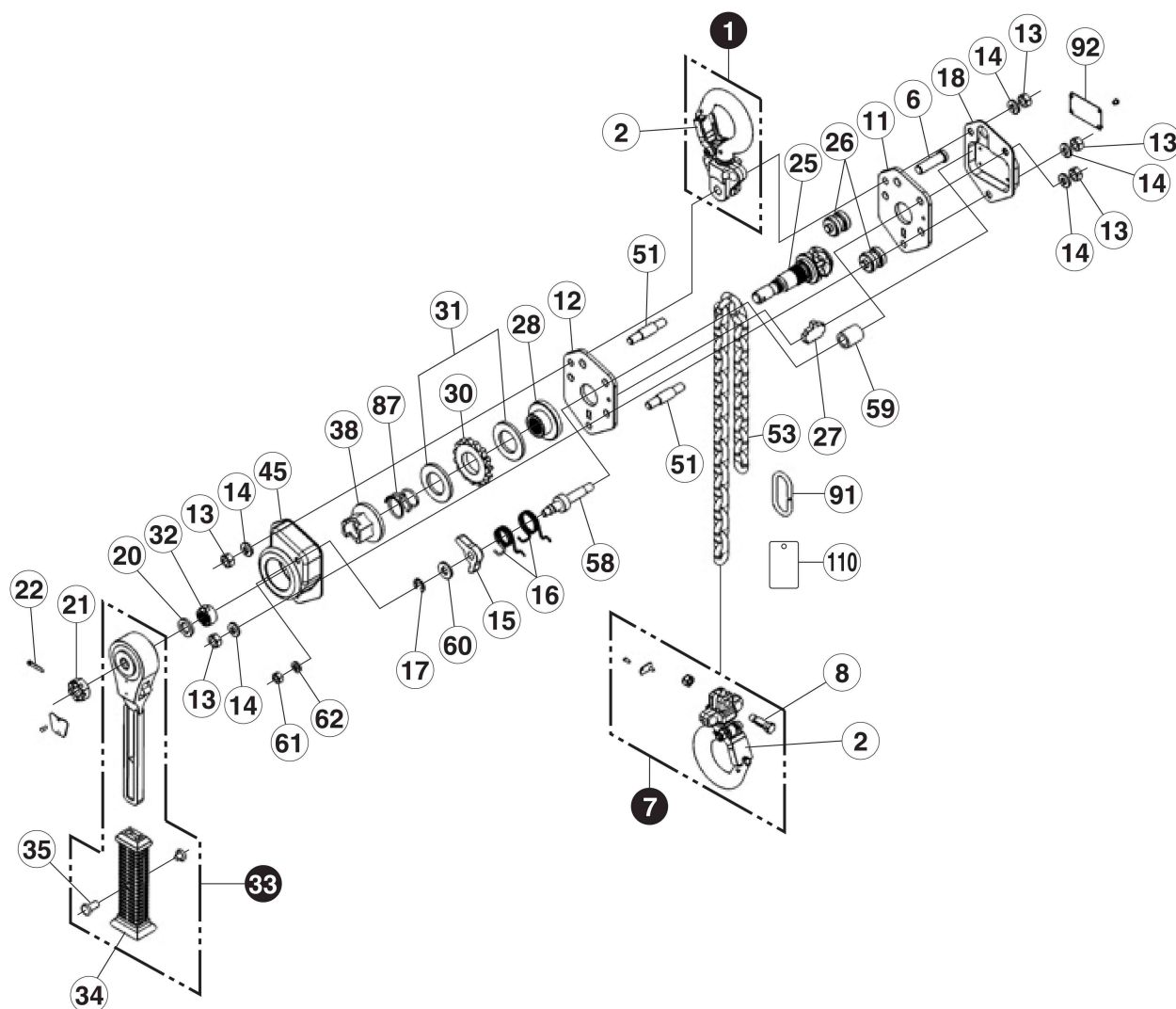


# Breakdown Schematics and Parts Names: Models Y II - 25

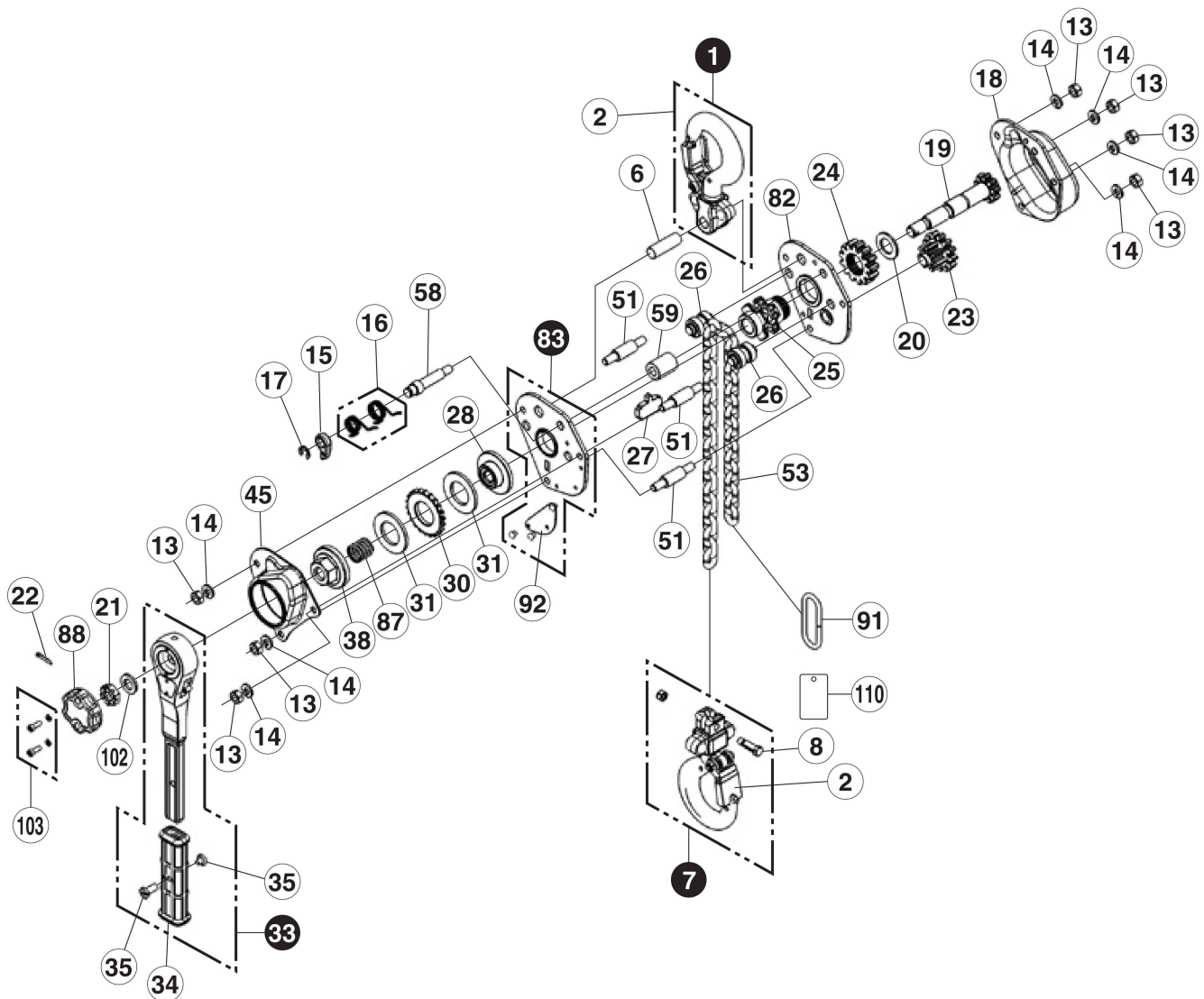


Symbols in Breakdown Schematics		Parts Names	Symbols in Breakdown Schematics		Parts Names	Symbols in Breakdown Schematics		Parts Names	Symbols in Breakdown Schematics		Parts Names
Set	Individual unit		Set	Individual unit		Set	Individual unit		Set	Individual unit	
1		Top hook set		15	Pawl	28		Disc hub		58	Ratchet pin
	2	Safety latch set		16	Pawl spring A/B	30		Ratchet wheel		59	Stay pipe
	6	Top hook pin		17	E-ring for pinion shaft	31		Brake lining		60	Plain washer
7		Bottom hook set		18	Gear cover	32		Check washer		61	Hex. Nut
	2	Safety latch set		20	Washer for pinion shaft	33		Lever set		62	Spring washer
	8	Chain stop bolt set		21	Hex. castle nut		34	Lever grip		87	Spring for floating mechanism
	11	Gear side plate set		22	Cotter Pin		35	Bracket screw		91	Chain stopper
	12	Lever side plate set		25	Load sheave		38	Female screw		92	Name plate
	13	Hex. nut		26	Chain guide set		45	Brake cover		110	Tag
	14	Spring washer		27	Chain stripper		51	Stay bolt		53	Load chain set

※Parts indicated with black lines are included in the parts with gray lines.      ※The black line parts are also provided for sale individually.

Example : Part No. 7, Bottom hook set includes Part No. 2, Safety latch set and Part No. 8, Chain stop bolt set.

# Breakdown Schematics and Parts Names: Models YA- 50



Symbols in Breakdown Schematics		Parts Names	Symbols in Breakdown Schematics		Parts Names	Symbols in Breakdown Schematics		Parts Names	Symbols in Breakdown Schematics		Parts Names
Set	Individual unit		Set	Individual unit		Set	Individual unit		Set	Individual unit	
1		Top hook set		18	Gear cover		30	Ratchet wheel	83		Lever-side plate set
	2	Safety latch set		19	Pinion shaft		31	Brake lining		92	Name plate
	6	Top hook pin		20	Washer for pinion shaft	33		Lever ass'y		87	Spring for floating mechanism
7		Bottom hook set		21	Hex.castle nut		34	Lever grip		88	Feed handle
	2	Safety latch set		22	Cotter pin		35	Bracket screw		91	Chain stopper
	8	Chain stop bolt set		23	2nd and 3rd gear set		38	Female screw		102	Check washer
	13	Hex. nut		24	Load gear		45	Brake cover		103	Hex. socket head cap screw set
	14	Spring washer		25	Load sheave		51	Stay bolt		110	Tag
	15	Pawl		26	Chain guide set		58	Ratchet pin		53	Load chain set
	16	Pawl spring A/B		27	Chain stripper		59	Stay pipe			
	17	E-ring for pawl		28	Disc hub		82	Gear-side plate set			

※Parts indicated with black lines are included in the parts with gray lines.      ※The black line parts are also provided for sale individually.

Example : Part No. 7, Bottom hook set includes Part No. 2, Safety latch set and Part No. 8, Chain stop bolt set.