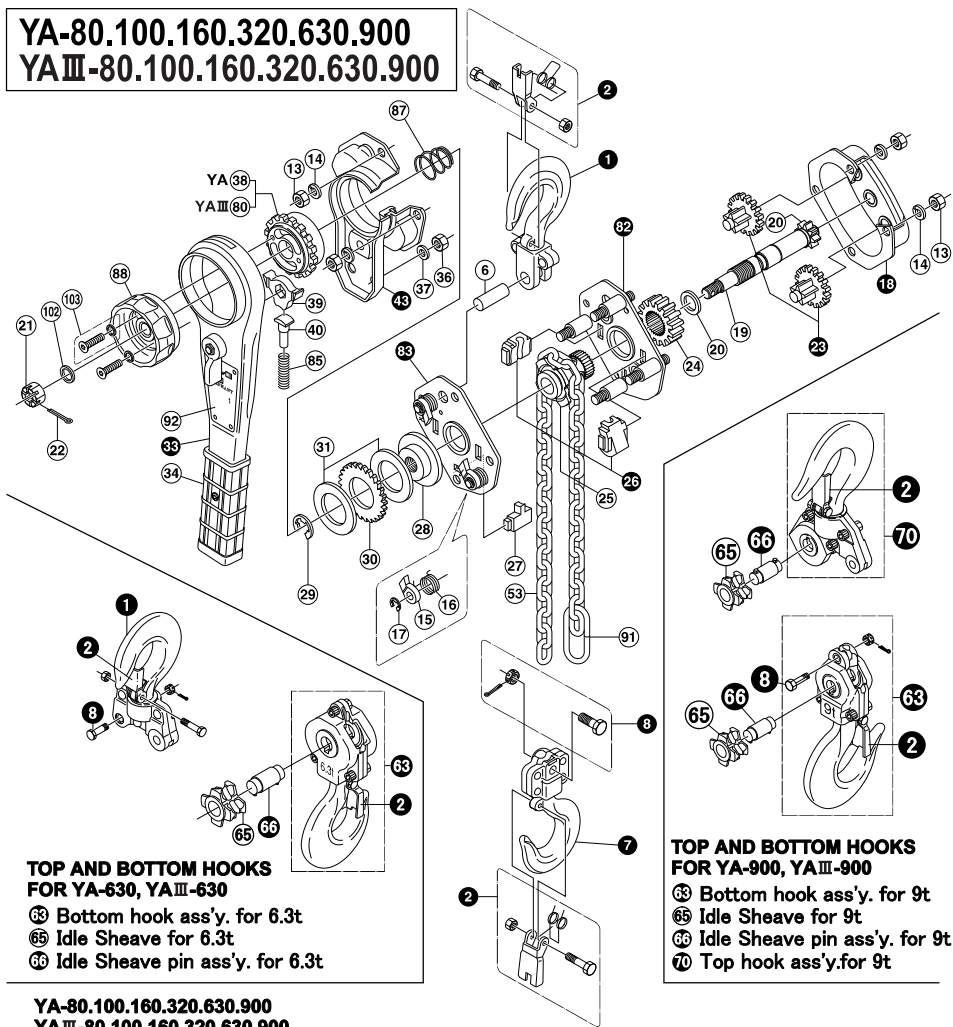


YA-80.100.160.320.630.900
YAⅢ-80.100.160.320.630.900



TOP AND BOTTOM HOOKS FOR YA-630, YAⅢ-630

- 63 Bottom hook ass'y. for 6.3t
- 65 Idle Sheave for 6.3t
- 66 Idle Sheave pin ass'y. for 6.3t

TOP AND BOTTOM HOOKS FOR YA-900, YAⅢ-900

- 63 Bottom hook ass'y. for 9t
- 65 Idle Sheave for 9t
- 66 Idle Sheave pin ass'y. for 9t
- 70 Top hook ass'y. for 9t

YA-80.100.160.320.630.900
YAⅢ-80.100.160.320.630.900

- 1 Top hook ass'y
- 2 Safety latch set
- 8 Top hook pin
- 7 Bottom hook ass'y
- 9 Chain stop bolt set
- 13 Hex. nut
- 14 Spring washer
- 15 Pawl
- 16 Pawl spring
- 17 E-ring for pawl
- 18 Gear cover ass'y
- 19 Pinion shaft
- 20 Washer for pinion shaft
- 21 Hex. castle nut
- 22 Cotter pin
- 23 2nd and 3rd gear ass'y
- 24 Load gear
- 25 Load sheave
- 26 Chain guide ass'y
- 27 Chain stripper
- 28 Disc hub
- 29 E-ring for disc hub
- 30 Ratchet wheel
- 31 Brake lining
- 32 Lever ass'y
- 34 Lever grip set
- 35 Hex. nut
- 37 Spring washer
- 38 Model YA : Feed gear
- 39 Ratchet for feed gear

- 40 Model YA : Ratchet spring pin
- 43 Lever cover set
- 45 Load chain set
- 53 Model YAⅢ : TORCON device set
- 32 Gear-side plate ass'y
- 35 Lever-side plate ass'y
- 15 Ratchet spring
- 87 Spring for floating mechanism (Part for YA and YAⅢ is different.)
- 88 Feed handle (Part for YA and YAⅢ is different.)
- 91 Chain stopper
- 92 Name plate (Part for YA and YAⅢ is different.)
- 102 Check Washer
- 109 Hex. socket head cap screw set (Part for YA and YAⅢ is different.)