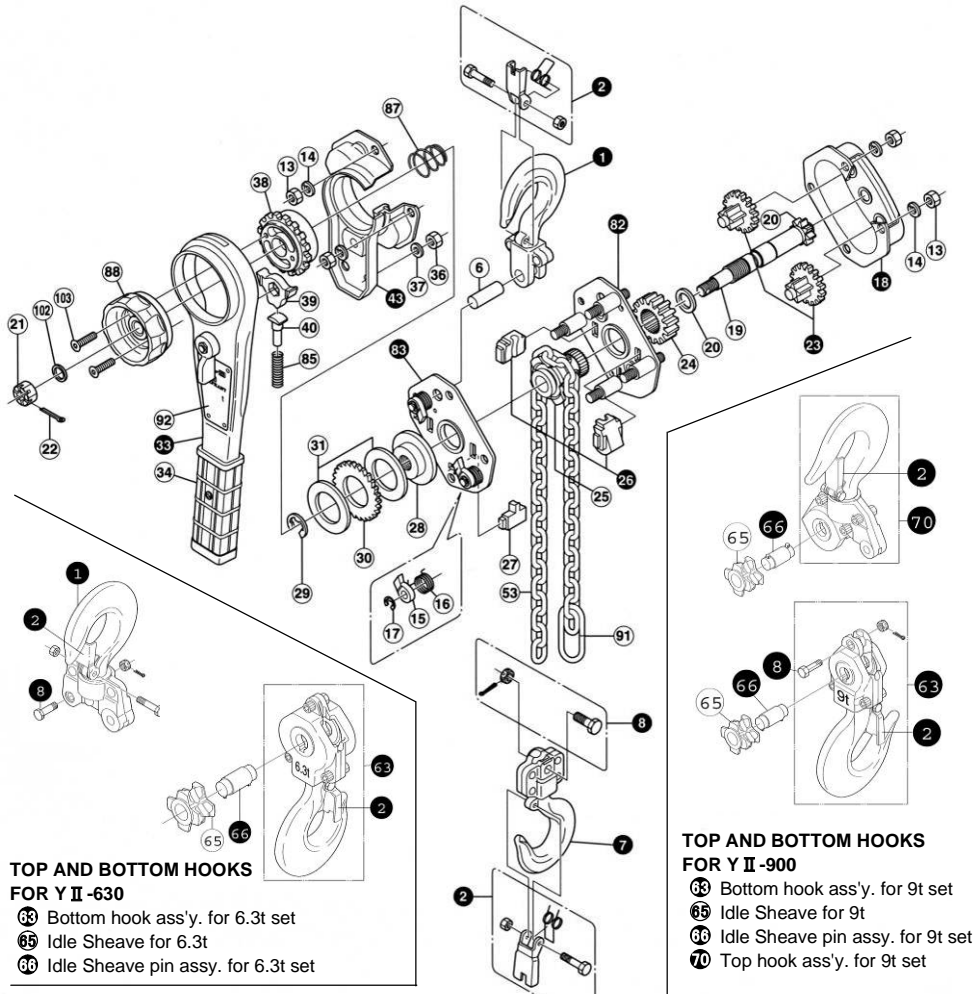


DETAIL DRAWING : YA-80.100.160.320.630.900**TOP AND BOTTOM HOOKS
FOR Y II -630**

- 63 Bottom hook ass'y. for 6.3t set
- 65 Idle Sheave for 6.3t
- 66 Idle Sheave pin assy. for 6.3t set

Y II -80.100.160.320.630.900

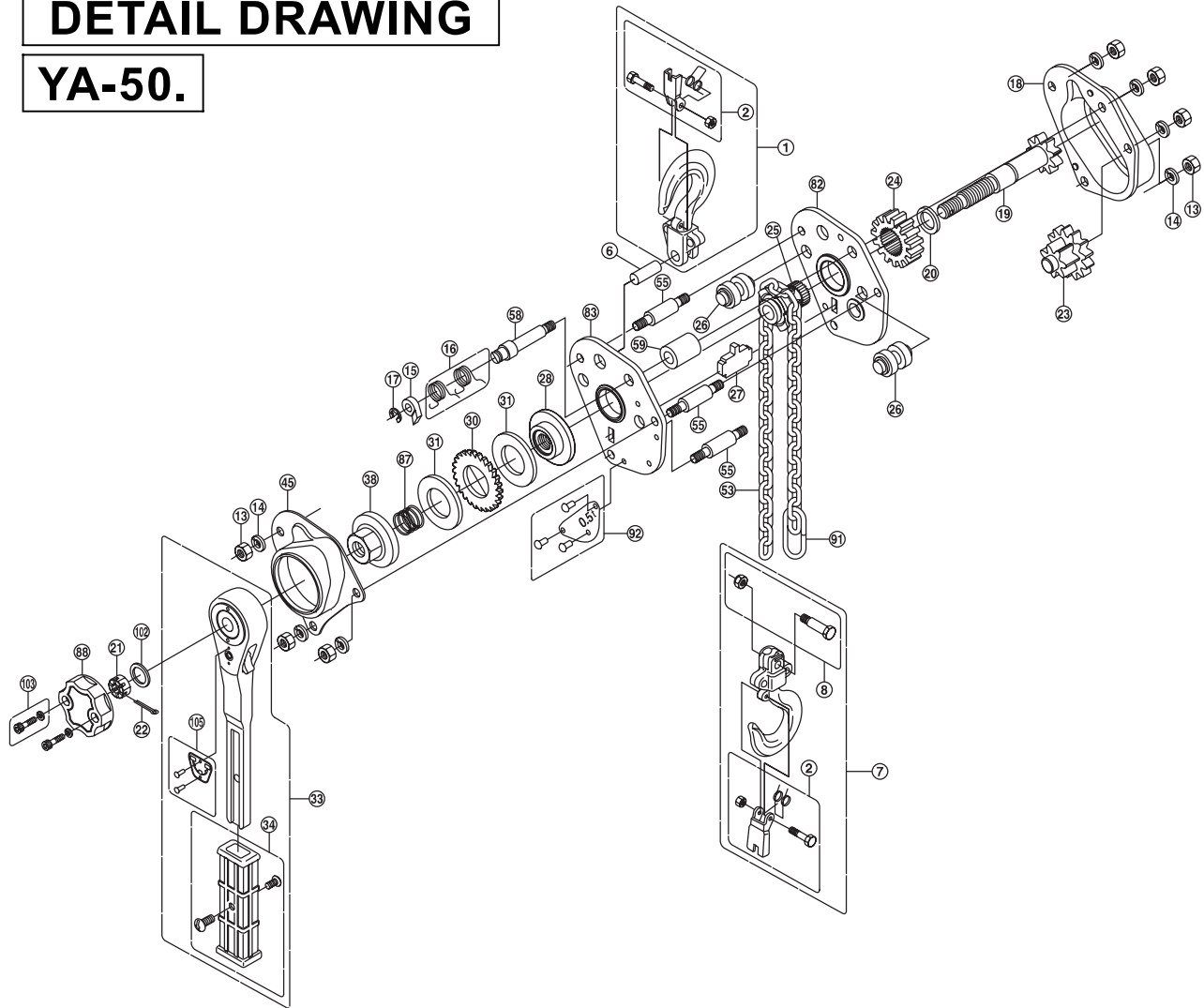
- | | | |
|----------------------------|-------------------------------|----------------------------------|
| 1 Top hook ass'y set | 22 Cotter pin | 38 Feed gear |
| 2 Safety latch set | 23 2nd and 3rd gear ass'y set | 39 Ratchet for feed gear |
| 8 Top hook pin | 24 Load gear | 40 Ratchet spring pin |
| 7 Bottom hook ass'y set | 25 Load sheave | 43 Lever cover set |
| 8 Chain stop bolt set | 26 Chain guide ass'y set | 53 Load chain set |
| 13 Hex. nut | 27 Chain stripper | 62 Gear-side plate ass'y set |
| 14 Spring washer | 28 Disc hub | 63 Lever-side plate ass'y set |
| 15 Pawl | 29 E-ring for disc hub | 65 Ratchet spring |
| 16 Pawl spring | 30 Ratchet wheel | 67 Spring for floating mechanism |
| 17 E-ring for pawl | 31 Brake lining | 68 Feed handle |
| 18 Gear cover ass'y set | 32 Lever ass'y set | 69 Chain stopper |
| 19 Pinion shaft | 34 Lever grip set | 92 Name plate |
| 20 Washer for pinion shaft | 36 Hex. nut | 102 Check Washer |
| 21 Hex. castle nut | 37 Spring washer | 103 Countersunk bolt |

**TOP AND BOTTOM HOOKS
FOR Y II -900**

- 63 Bottom hook ass'y. for 9t set
- 65 Idle Sheave for 9t
- 66 Idle Sheave pin assy. for 9t set
- 70 Top hook ass'y. for 9t set

DETAIL DRAWING

YA-50.



YA-50

- | | |
|---------------------------|-----------------------------------|
| ① Top hook ass'y | ②⑧ Disc hub |
| ② Safety latch set | ③⑩ Ratchet wheel |
| ⑥ Top hook pin | ④⑪ Brake lining |
| ⑦ Bottom hook ass'y | ⑤⑫ Lever ass'y |
| ⑧ Chain stop bolt set | ⑥⑬ Lever grip set |
| ⑬ Hex. nut | ⑦⑭ Female screw |
| ⑭ Spring washer | ⑧⑮ Brake cover |
| ⑮ Pawl | ⑨⑯ Load chain set |
| ⑯ Pawl spring | ⑩⑰ Stay bolt |
| ⑰ E-ring for pawl | ⑪⑱ Ratchet pin |
| ⑱ Gear cover ass'y | ⑫⑲ Stay pipe |
| ⑲ Pinion shaft | ⑬⑳ Gear-side plate ass'y |
| ⑳ Washer for pinion shaft | ⑭㉑ Lever-side plate ass'y |
| ㉑ Hex. castle nut | ⑮㉒ Spring for floating mechanism |
| ㉒ Cotter pin | ⑯㉓ Feed handle |
| ㉓ 2nd and 3rd gear ass'y | ⑰㉔ Chain stopper |
| ㉔ Load gear | ⑱㉕ Name plate |
| ㉕ Load sheave | ㉖㉗ Check Washer |
| ㉖ Chain guide ass'y | ㉘㉙ Hex. socket head cap screw set |
| ㉗ Chain stripper | ㉚㉛ Direction plate |