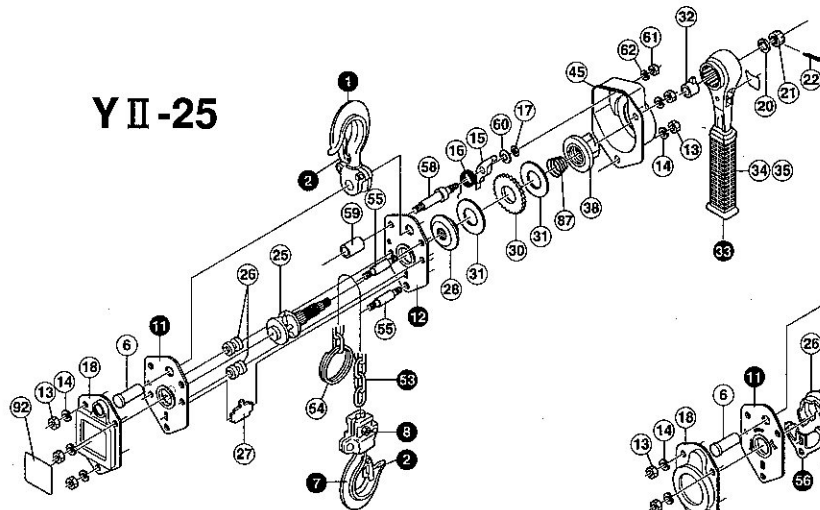
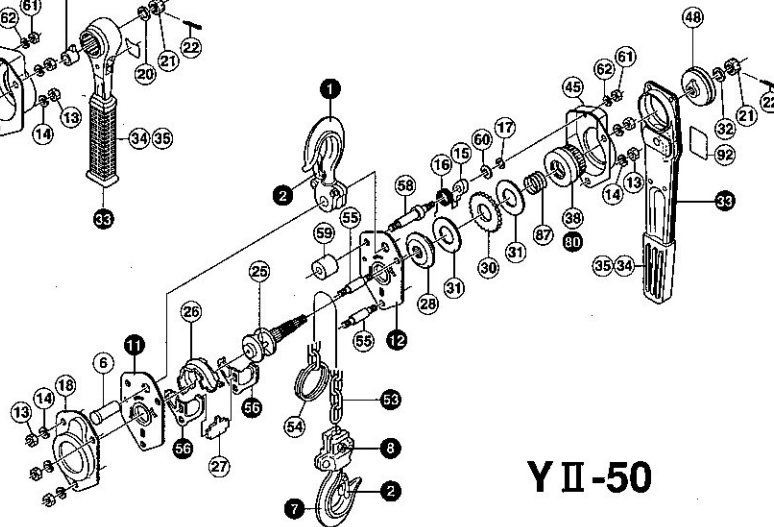


# DETAIL DRAWING : Y II -25. Y II -50

## Y II -25



## Y II -50



### Y II -25. Y II -50

- |                              |                             |                                  |
|------------------------------|-----------------------------|----------------------------------|
| ① Top hook assy set          | ②① Hex. castle nut          | ④⑤ Brake cover                   |
| ② Safety latch set           | ②② Cotter pin               | ④⑥ Lever setter                  |
| ③ Top hook pin               | ②③ Load sheave              | ⑤⑥ Load chain                    |
| ⑦ Bottom hook assy set       | ②④ Chain guide assy set     | ⑤④ Chain stopper                 |
| ⑧ Chain stop bolt set        | ②⑦ Chain stripper           | ⑤⑤ Stay bolt                     |
| ①① Gear side plate assy set  | ②⑧ Disc hub                 | ⑤⑥ chain leader set (Y II -50)   |
| ②② Lever side plate assy set | ③① Ratchet wheel            | ⑤⑧ Ratchet pin                   |
| ③③ Hex. nut                  | ③② Friction disc            | ⑤⑨ Stay pipe                     |
| ④④ Spring washer             | ③③ Check washer             | ⑥① Plain washer (Y II -25)       |
| ⑤⑤ Ratchet                   | ③④ Lever assy set           | ⑥② Hex.nut                       |
| ⑥⑥ Ratchet spring            | ③④ Lever grip               | ⑥③ Spring washer                 |
| ⑦⑦ E-ring                    | ③⑤ Lever assy               | ⑥④ Device set                    |
| ⑧⑧ Gear cover assy set       | ③⑥ Pair screw               | ⑥⑦ Spring for floating mechanism |
| ⑨⑨ Washer for pinion shaft   | ③⑦ Feed gear (Female screw) | ⑥⑧ Name plate                    |