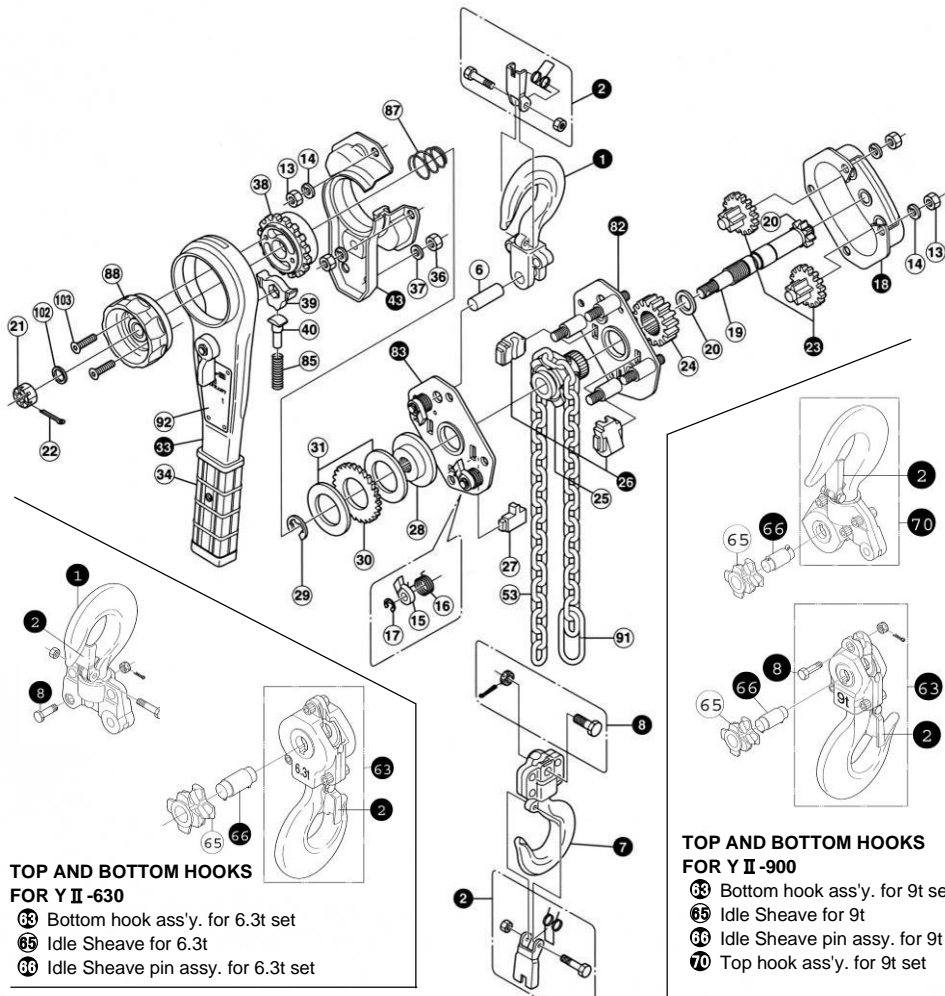


DETAIL DRAWING : YA-80.100.160.320.630.900



TOP AND BOTTOM HOOKS FOR Y II -630

- 33 Bottom hook ass'y. for 6.3t set
- 85 Idle Sheave for 6.3t
- 36 Idle Sheave pin assy. for 6.3t set

TOP AND BOTTOM HOOKS FOR Y II -900

- 33 Bottom hook ass'y. for 9t set
- 15 Idle Sheave for 9t
- 66 Idle Sheave pin assy. for 9t set
- 70 Top hook ass'y. for 9t set

Y II -80.100.160.320.630.900

- | | | |
|--|---|---|
| <ul style="list-style-type: none"> 1 Top hook ass'y set 2 Safety latch set 8 Top hook pin 7 Bottom hook ass'y set 8 Chain stop bolt set 13 Hex. nut 14 Spring washer 15 Pawl 16 Pawl spring 17 E-ring for pawl 18 Gear cover ass'y set 19 Pinion shaft 20 Washer for pinion shaft 21 Hex. castle nut | <ul style="list-style-type: none"> 22 Cotter pin 23 2nd and 3rd gear ass'y set 24 Load gear 25 Load sheave 26 Chain guide ass'y set 27 Chain stripper 28 Disc hub 29 E-ring for disc hub 30 Ratchet wheel 31 Brake lining 32 Lever ass'y set 34 Lever grip set 36 Hex. nut 37 Spring washer | <ul style="list-style-type: none"> 38 Feed gear 39 Ratchet for feed gear 40 Ratchet spring pin 43 Lever cover set 53 Load chain set 62 Gear-side plate ass'y set 63 Lever-side plate ass'y set 65 Ratchet spring 67 Spring for floating mechanism 68 Feed handle 69 Chain stopper 92 Name plate 102 Check Washer 103 Countersunk bolt |
|--|---|---|